

# H2Teesside Project

Planning Inspectorate Reference: EN070009

Land within the boroughs of Redcar and Cleveland and Stockton-on-Tees, Teesside and within the borough of Hartlepool, County Durham

Document Reference: 8.54 Sembcorp Protection Corridor Plans

Planning Act 2008



**Applicant: H2 Teesside Ltd**

Date: February 2025

Rev:

---

## DOCUMENT HISTORY

<b>DOCUMENT REF</b>	8.54		
<b>REVISION</b>	0		
<b>AUTHOR</b>	bp		
<b>SIGNED</b>	bp	<b>DATE</b>	26.02.25
<b>APPROVED BY</b>	bp		
<b>SIGNED</b>	bp	<b>DATE</b>	26.02.25



**Key:**

- Order Limits
- Wilton Complex
- Sembcorp Protection Corridor

**Notes:**

Coordinate System: British National Grid  
 Projection: Transverse Mercator  
 Datum: OSGB 1936

**Interest:**  
 N/A

**Location:**  
 Billingham, Stockton-on-Tees, Tees Valley, TS2 1TT

**Coords:** 453315, 522301

**Scheme Name:**  
 H2Teesside

**Drawing Name:**  
 Information Plan

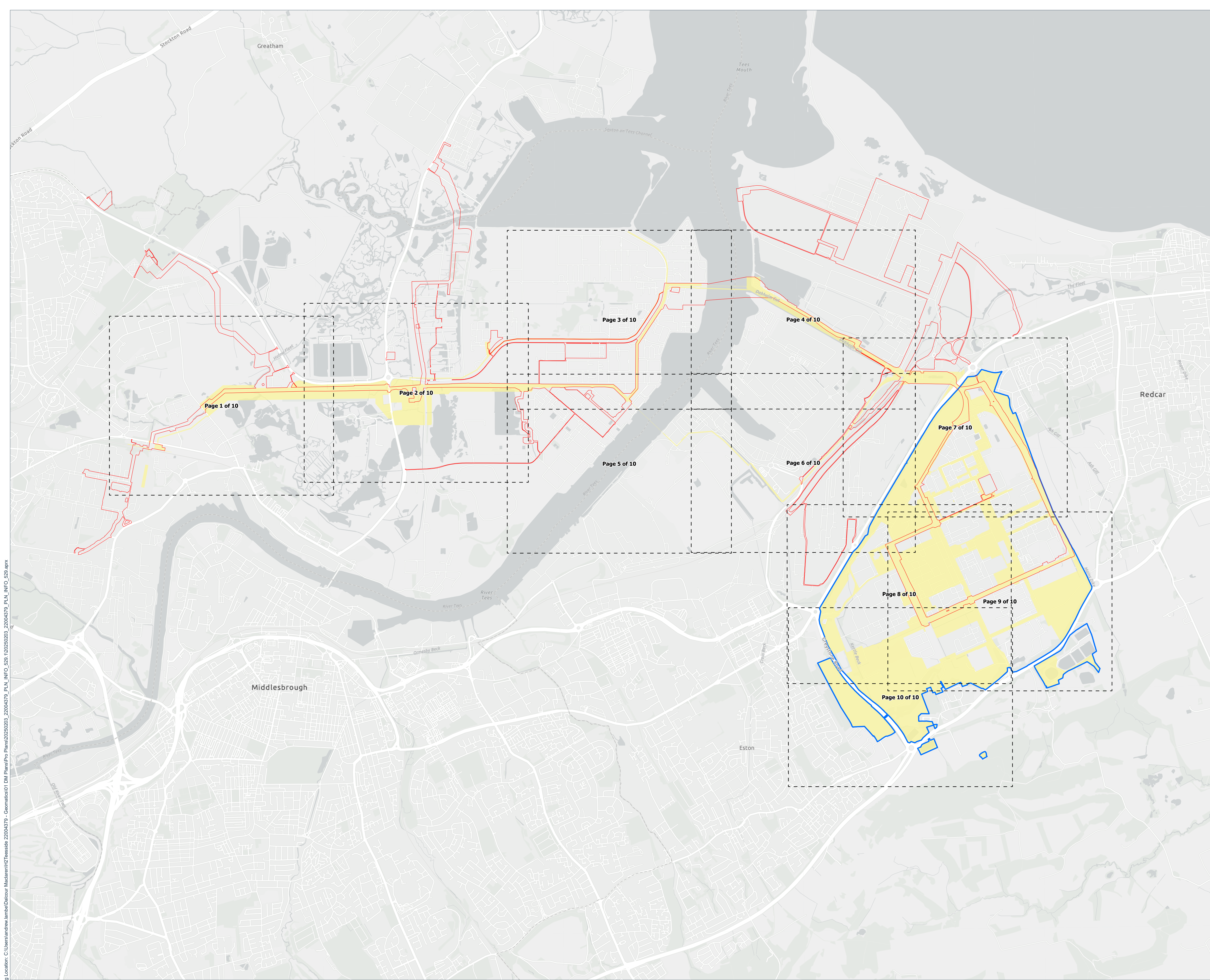
**Drawing No:** 22004379\_PLN\_INFO\_529.1\_B

Rev	Date	Description
-	03.02.2025	First Issue
A	24.02.2025	Red Line Symbology Updated, PP Corridor Updated, Wilton Complex Updated
B	25.02.2025	Red Line Boundary Updated

**Drawn:** AL  
**Approved:** PH  
**Sheet No:** 1 of 1  
**Sheet Size:** A1



The information contained in this document is confidential and protected by copyright. The use, copying or disclosure to a third party, either wholly or in part, except with the written permission of and in the manner prescribed by BP Exploration Company Operating Limited constitutes an infringement of copyright. Dalcour Maclaren does not warrant that this document is definitive nor free of error and does not accept liability for any loss caused or arising from reliance upon information provided herein. Although our best efforts have been made to ensure the accuracy of these plans, all measurements must be confirmed on site. BASED UPON THE ORDNANCE SURVEY MAP WITH THE SANCTION OF THE CONTROLLER OF HM STATIONERY OFFICE. CROWN COPYRIGHT RESERVED. © OS LICENCE No. AC000080812





- Key:**
- Sembcorp Protection Corridor
  - Order Limits
  - Wilton Complex

**Notes:**

Coordinate System: British National Grid  
 Projection: Transverse Mercator  
 Datum: OSGB 1936

**Interest:**  
N/A

**Location:**  
Billingham, Stockton-on-Tees, Tees Valley,  
TS2 1TT

**Coords:** 448682, 523356

**Scheme Name:**  
H2 Teesside

**Drawing Name:**  
Information Plan

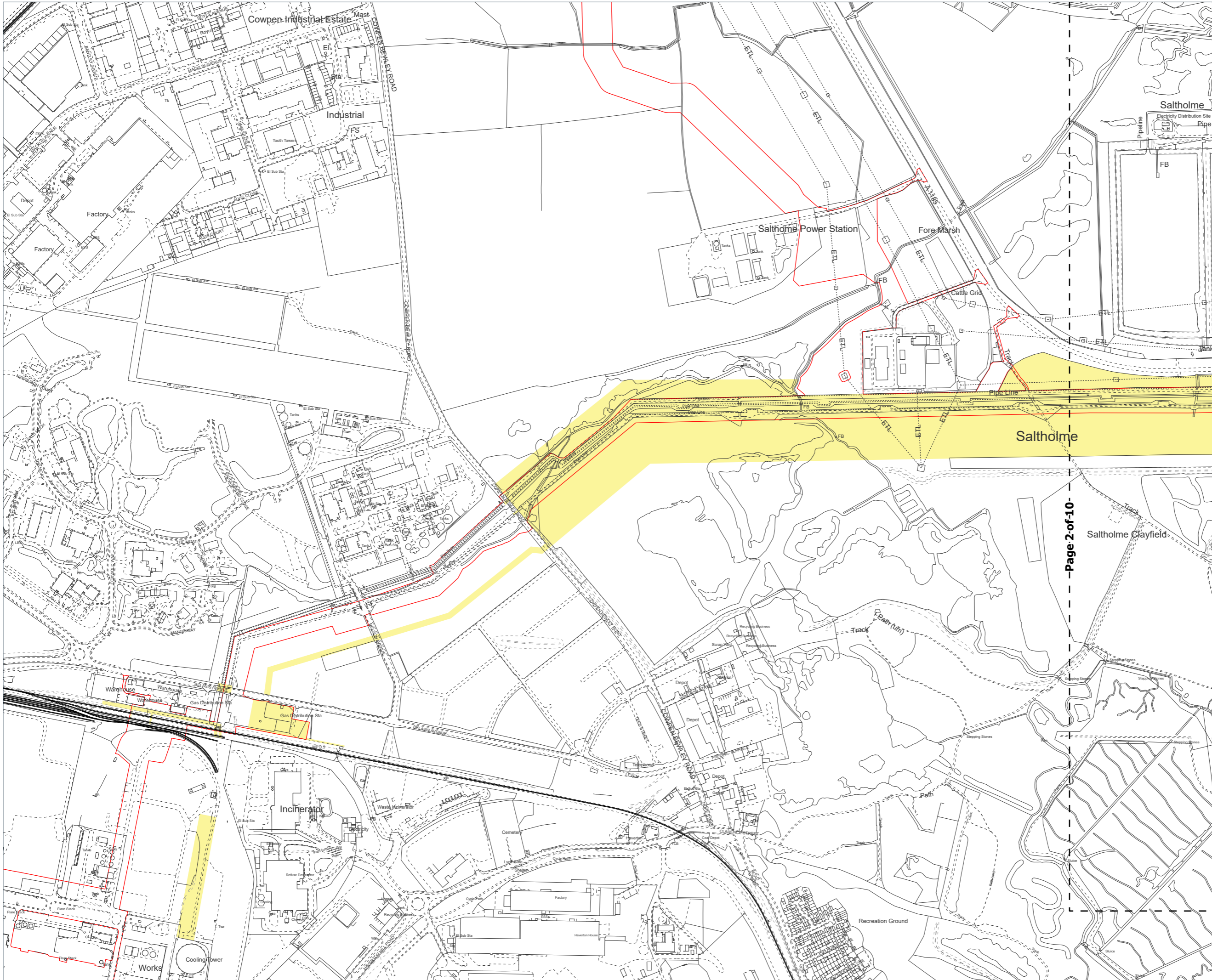
**Drawing No:** 22004379\_PLN\_INFO\_530.1\_B

Rev	Date	Description
-	03.02.2025	First Issue
A	24.02.2025	Red Line Symbology Updated, PP Corridor Updated, Wilton Complex Updated
B	25.02.2025	Red Line Boundary Updated

**Drawn:** AL  
**Approved:** PH  
**Sheet No:** 1 of 10  
**Sheet Size:** A3



The information contained in this document is confidential and protected by copyright. The use, copying or disclosure to a third party, either wholly or in part, except with the written permission of, and in the manner prescribed by BP Exploration Operating Company Limited constitutes an infringement of copyright. Dalcour MacLaren does not warrant that this document is definitive nor free of error and does not accept liability for any loss caused or arising from reliance upon information provided herein. Although our best efforts have been made to ensure the accuracy of these plans, all measurements must be confirmed on site. BASED UPON THE ORDINANCE SURVEY MAP WITH THE SANCTION OF THE CONTROLLER OF HM STATIONERY OFFICE. CROWN COPYRIGHT RESERVED. © OS LICENCE No. AC0000808122



- Page 2 of 10 -

Drawing Location: C:\Users\andrew.lambe\Dalcour MacLaren\H2 Teesside\22004379 - Geomatics\01 DM Plans\Pro Plans\22004379\_PLN\_INFO\_530.1\_20250203\_22004379\_PLN\_INFO\_529.aprx



- Key:**
- Sembcorp Protection Corridor
  - Order Limits
  - Wilton Complex

**Notes:**

Coordinate System: British National Grid  
 Projection: Transverse Mercator  
 Datum: OSGB 1936

**Interest:**

N/A

**Location:**  
 Billingham, Stockton-on-Tees, Tees Valley,  
 TS2 1TT

**Coords:** 450982, 523508

**Scheme Name:**  
 H2 Teesside

**Drawing Name:**  
 Information Plan

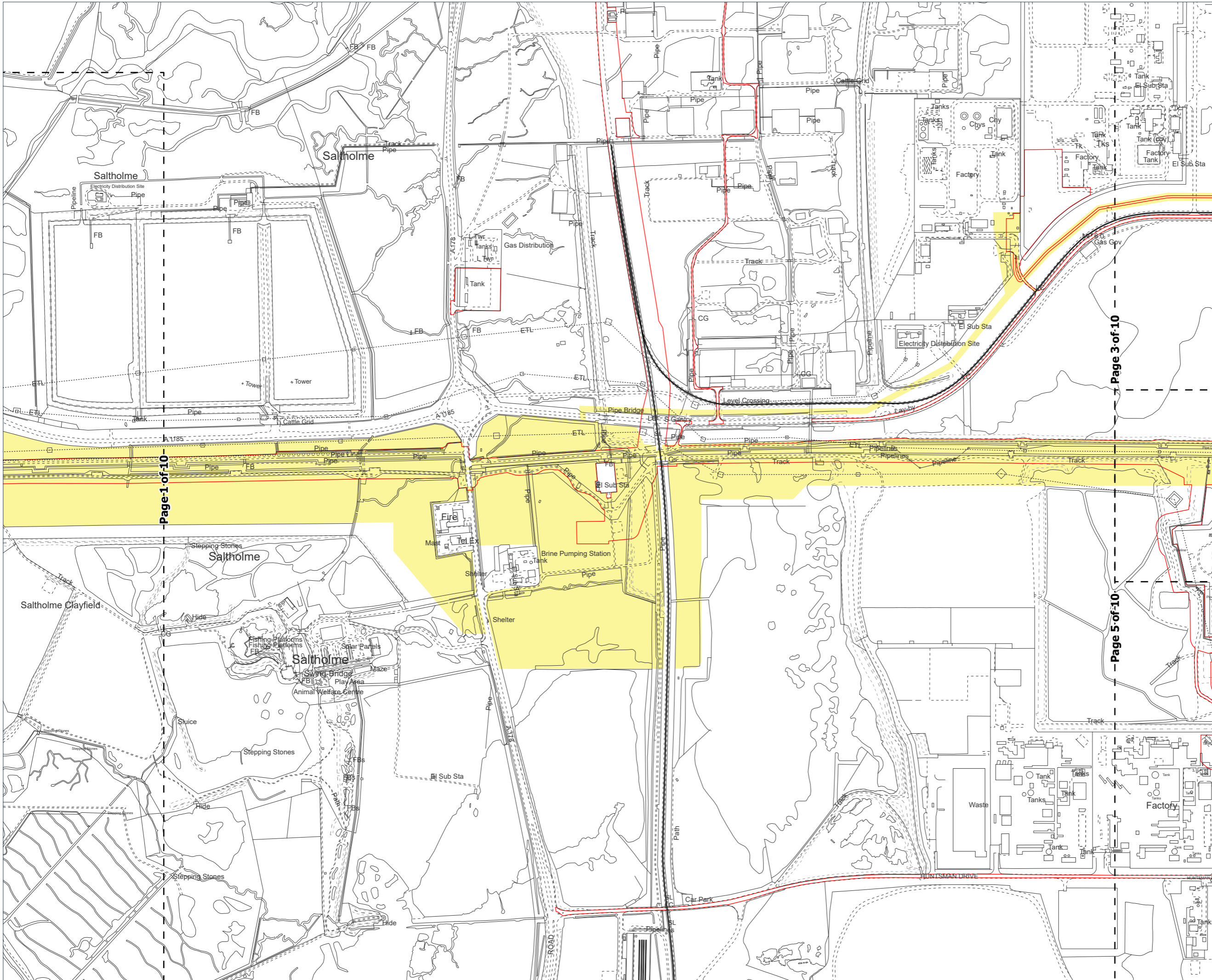
**Drawing No:** 22004379\_PLN\_INFO\_530.2\_B

Rev	Date	Description
-	03.02.2025	First Issue
A	24.02.2025	Red Line Symbology Updated, PP Corridor Updated, Wilton Complex Updated
B	25.02.2025	Red Line Boundary Updated

**Drawn:** AL  
**Approved:** PH  
**Sheet No:** 2 of 10  
**Sheet Size:** A3



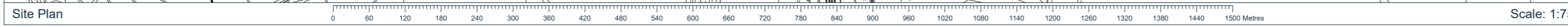
The information contained in this document is confidential and protected by copyright. The use, copying or disclosure to a third party, either wholly or in part, except with the written permission of, and in the manner prescribed by BP Exploration Operating Company Limited constitutes an infringement of copyright. Dalcour Maclaren does not warrant that this document is definitive nor free of error and does not accept liability for any loss caused or arising from reliance upon information provided herein. Although our best efforts have been made to ensure the accuracy of these plans, all measurements must be confirmed on site. BASED UPON THE ORDINANCE SURVEY MAP WITH THE SANCTION OF THE CONTROLLER OF HM STATIONERY OFFICE. CROWN COPYRIGHT RESERVED. © OS LICENCE No. AC0000808122



Page 1 of 10

Page 3 of 10

Page 5 of 10



Scale: 1:7500

Site Plan

Drawing Location: C:\Users\andrew.lambe\Dalcour Maclaren\H2 Teesside\22004379 - Geomatics\01 DM Plans\Pro Plans\2025\02\03\_22004379\_PLN\_INFO\_530.2\_B.aprx



- Key:**
- Sembcorp Protection Corridor
  - Order Limits
  - Wilton Complex

**Notes:**

Coordinate System: British National Grid  
Projection: Transverse Mercator  
Datum: OSGB 1936

**Interest:**  
N/A

**Location:**  
Billingham, Stockton-on-Tees, Tees Valley,  
TS2 1TT

**Coords:** 453381, 524372

**Scheme Name:**  
H2 Teesside

**Drawing Name:**  
Information Plan

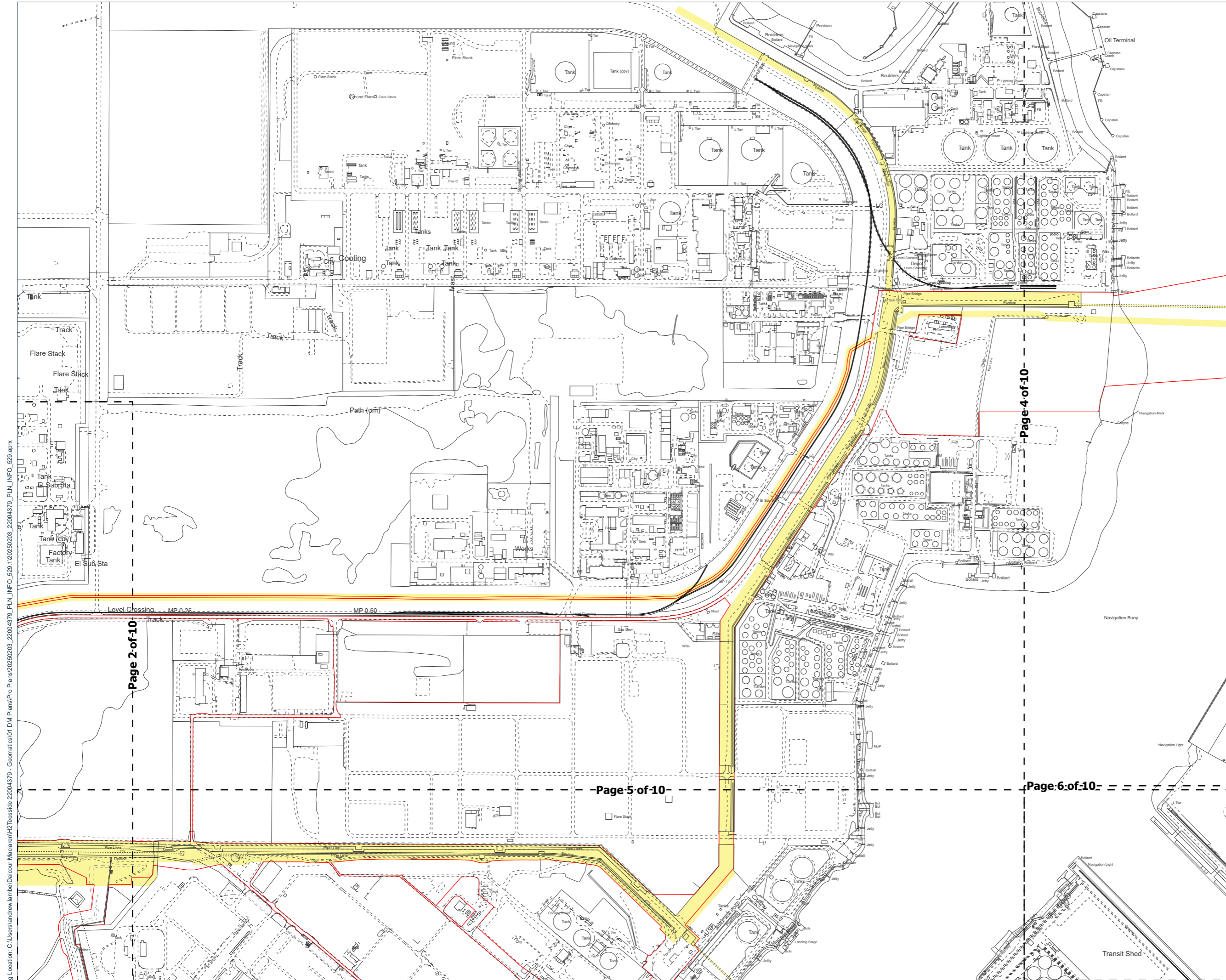
**Drawing No:** 22004379\_PLN\_INFO\_530.3\_B

Rev	Date	Description
-	03.02.2025	First Issue
A	24.02.2025	Red Line Symbology Updated, PP Corridor Updated, Wilton Complex Updated
B	25.02.2025	Red Line Boundary Updated

**Drawn:** AL  
**Approved:** PH  
**Sheet No:** 3 of 10  
**Sheet Size:** A3



The information contained in this document is confidential and protected by copyright. The use, copying or disclosure to a third party, either wholly or in part, except with the written permission of, and in the manner prescribed by BP Exploration Operating Company Limited constitutes an infringement of copyright. Dalcour Maclaren does not warrant that this document is definitive nor free of error and does not accept liability for any loss caused or arising from reliance upon information provided herein. Although our best efforts have been made to ensure the accuracy of these plans, all measurements must be confirmed on site. BASED UPON THE ORDINANCE SURVEY MAP WITH THE SANCTION OF THE CONTROLLER OF HM STATIONERY OFFICE. CROWN COPYRIGHT RESERVED. © OS LICENCE No. AC000080122



Drawing Location: C:\Users\andrew.lambe\Dalcour Maclaren\H2 Teesside\22004379 - Geomatics\01 DM Plans\Pro Plans\22004379\_PLN\_INFO\_530.3\_B.aprx



- Key:**
- Sembcorp Protection Corridor
  - Order Limits
  - Wilton Complex

**Notes:**

Coordinate System: British National Grid  
Projection: Transverse Mercator  
Datum: OSGB 1936

**Interest:**  
N/A

**Location:**  
Billingham, Stockton-on-Tees, Tees Valley,  
TS2 1TT

**Coords:** 455554, 524374

**Scheme Name:**  
H2 Teesside

**Drawing Name:**  
Information Plan

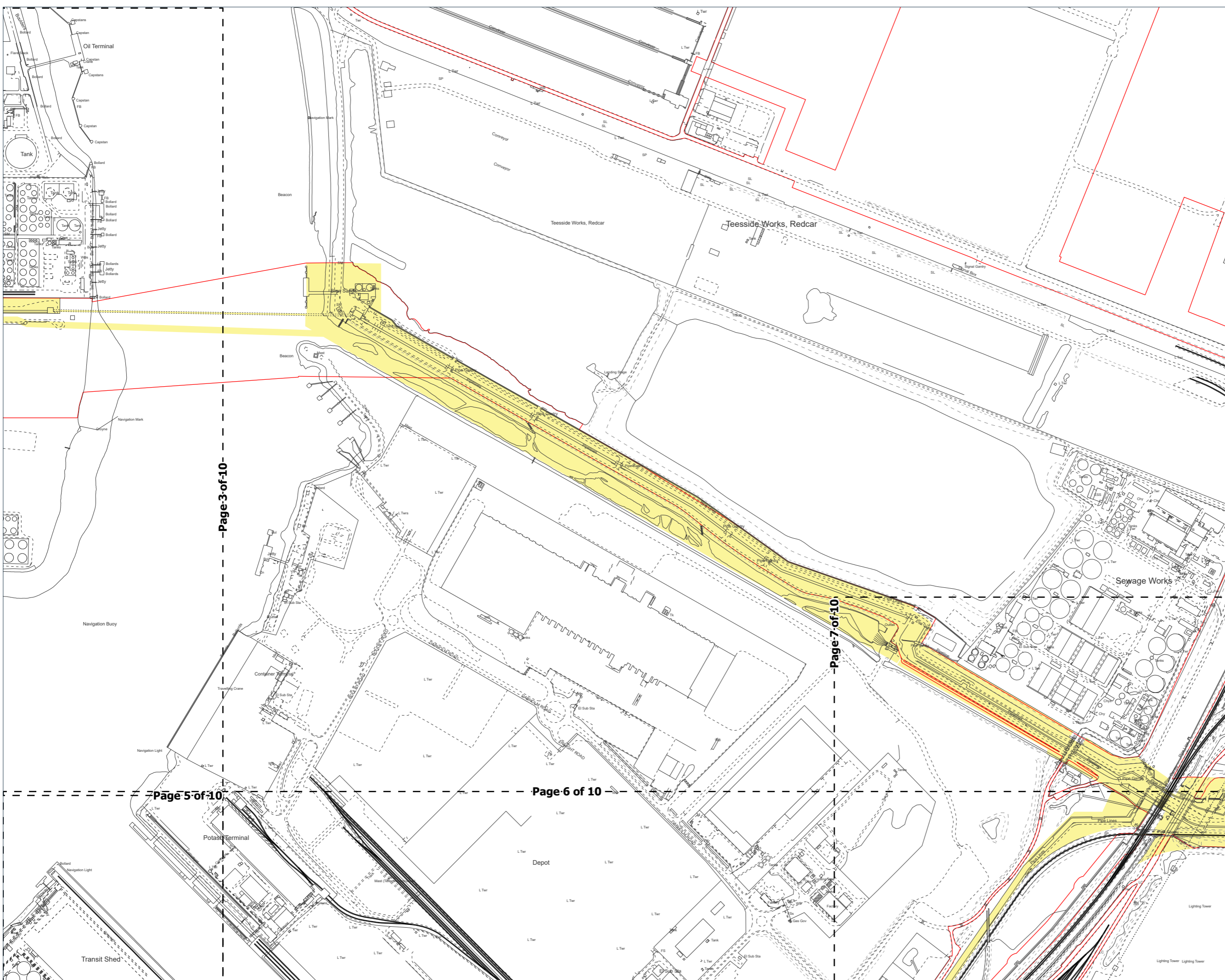
**Drawing No:** 22004379\_PLN\_INFO\_530.4\_B

Rev	Date	Description
-	03.02.2025	First Issue
A	24.02.2025	Red Line Symbology Updated, PP Corridor Updated, Wilton Complex Updated
B	25.02.2025	Red Line Boundary Updated

**Drawn:** AL  
**Approved:** PH  
**Sheet No:** 4 of 10  
**Sheet Size:** A3



The information contained in this document is confidential and protected by copyright. The use, copying or disclosure to a third party, either wholly or in part, except with the written permission of, and in the manner prescribed by BP Exploration Operating Company Limited constitutes an infringement of copyright. Dalcour Maclaren does not warrant that this document is definitive nor free of error and does not accept liability for any loss caused or arising from reliance upon information provided herein. Although our best efforts have been made to ensure the accuracy of these plans, all measurements must be confirmed on site. BASED UPON THE ORDINANCE SURVEY MAP WITH THE SANCTION OF THE CONTROLLER OF HM STATIONERY OFFICE. CROWN COPYRIGHT RESERVED. © OS LICENCE No. AC0000808122



Page 3 of 10

Page 7 of 10

Page 5 of 10

Page 6 of 10



- Key:**
- Sembcorp Protection Corridor
  - Order Limits
  - Wilton Complex

**Notes:**

Coordinate System: British National Grid  
Projection: Transverse Mercator  
Datum: OSGB 1936

**Interest:**  
N/A

**Location:**  
Billingham, Stockton-on-Tees, Tees Valley,  
TS2 1TT

**Coords:** 453381, 522671

**Scheme Name:**  
H2 Teesside

**Drawing Name:**  
Information Plan

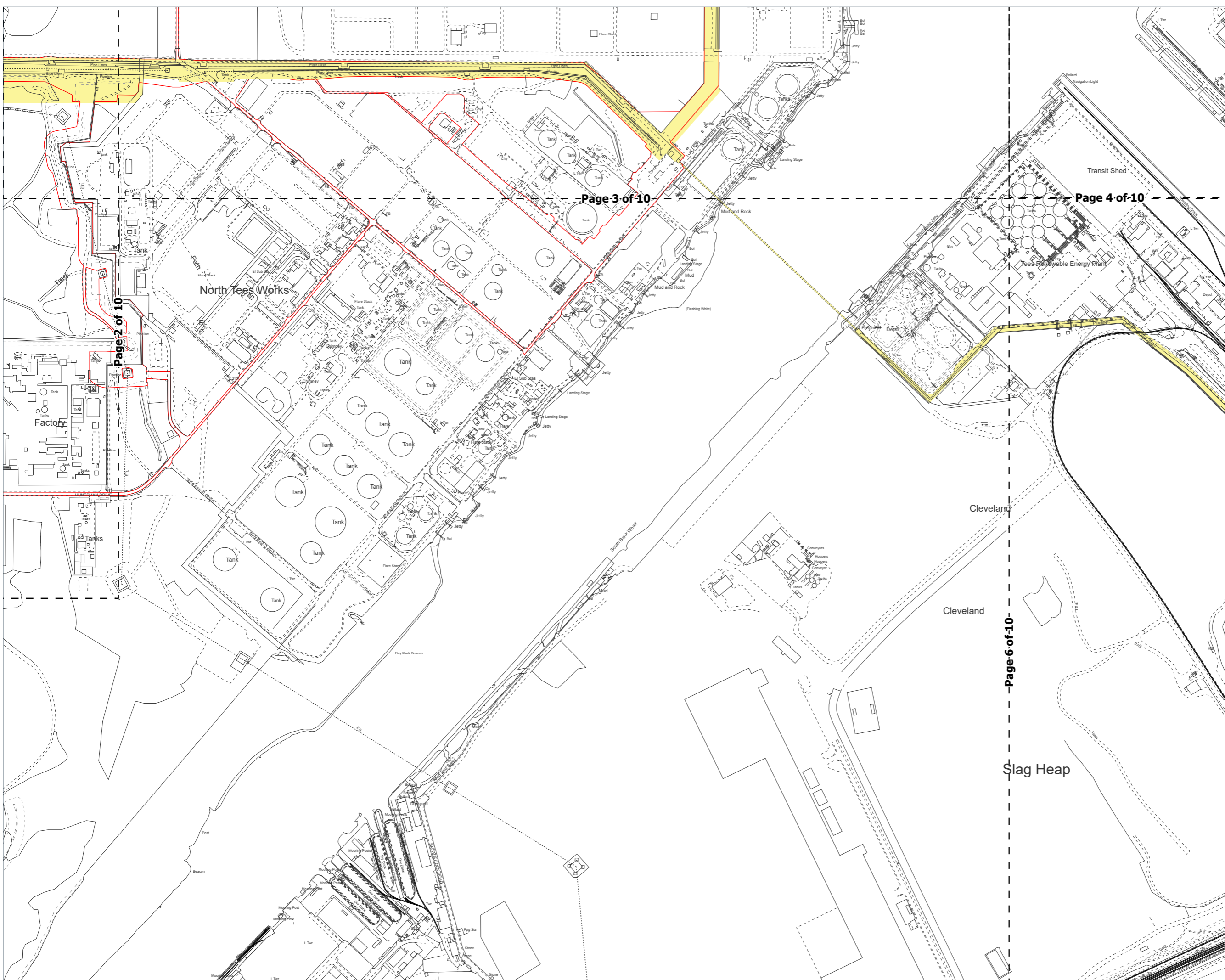
**Drawing No:** 22004379\_PLN\_INFO\_530.5\_B

Rev	Date	Description
-	03.02.2025	First Issue
A	24.02.2025	Red Line Symbology Updated, PP Corridor Updated, Wilton Complex Updated
B	25.02.2025	Red Line Boundary Updated

**Drawn:** AL  
**Approved:** PH  
**Sheet No:** 5 of 10  
**Sheet Size:** A3



The information contained in this document is confidential and protected by copyright. The use, copying or disclosure to a third party, either wholly or in part, except with the written permission of, and in the manner prescribed by BP Exploration Operating Company Limited constitutes an infringement of copyright. Dalcour MacLaren does not warrant that this document is definitive nor free of error and does not accept liability for any loss caused or arising from reliance upon information provided herein. Although our best efforts have been made to ensure the accuracy of these plans, all measurements must be confirmed on site. BASED UPON THE ORDINANCE SURVEY MAP WITH THE SANCTION OF THE CONTROLLER OF HM STATIONERY OFFICE. CROWN COPYRIGHT RESERVED. © OS LICENCE No. AC0000808122



Drawing Location: C:\Users\andrew.lambe\Dalcour MacLaren\H2 Teesside\22004379 - Geomatics\01 DM Plans\Pro Plans\22004379\_PLN\_INFO\_530.5\_B.aprx



- Key:**
- Sembcorp Protection Corridor
  - Order Limits
  - Wilton Complex

**Notes:**

Coordinate System: British National Grid  
Projection: Transverse Mercator  
Datum: OSGB 1936

**Interest:**  
N/A

**Location:**  
Billingham, Stockton-on-Tees, Tees Valley,  
TS2 1TT

**Coords:** 455554, 522680

**Scheme Name:**  
H2 Teesside

**Drawing Name:**  
Information Plan

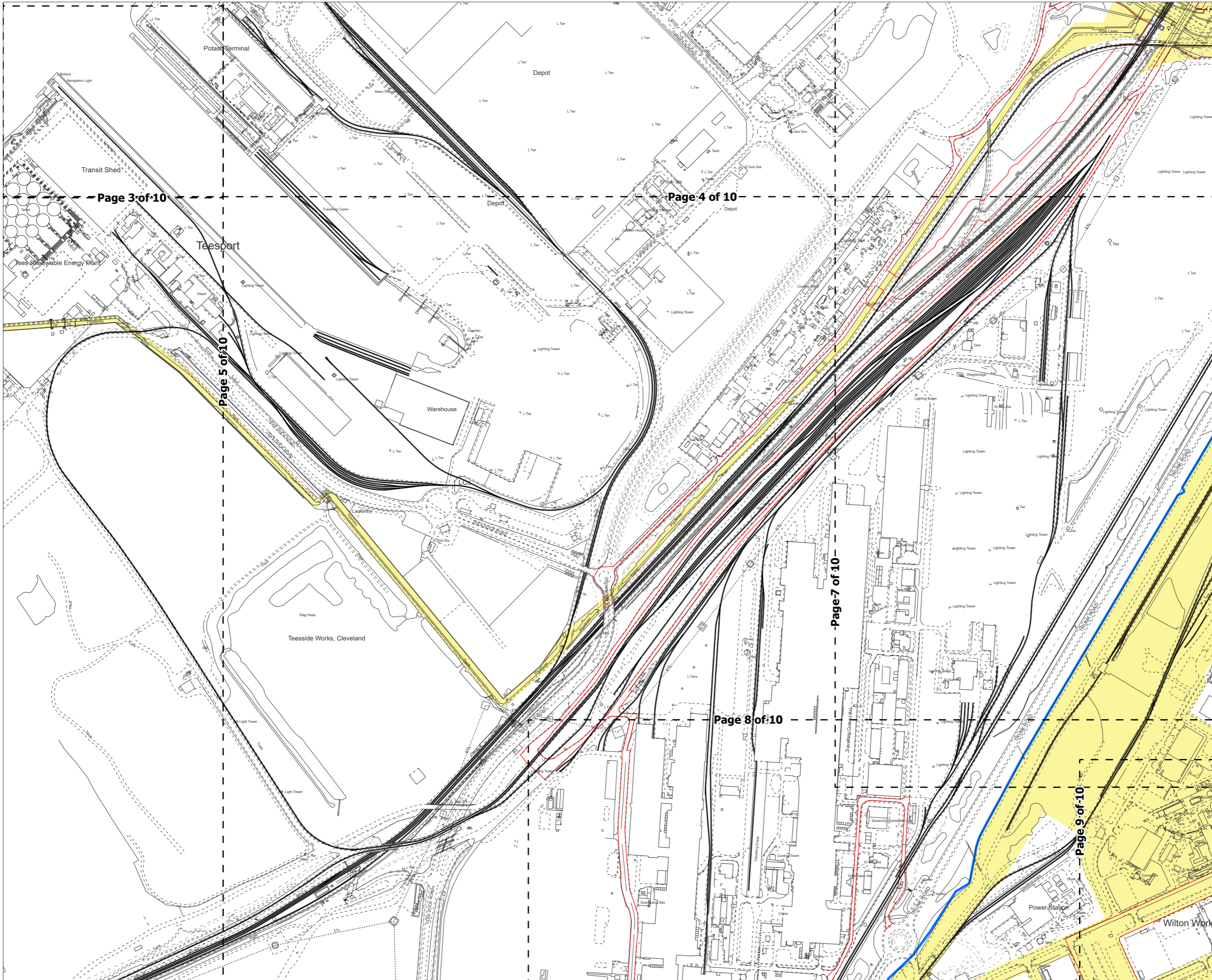
**Drawing No:** 22004379\_PLN\_INFO\_530.6\_B

Rev	Date	Description
-	03.02.2025	First Issue
A	24.02.2025	Red Line Symbology Updated, PP Corridor Updated, Wilton Complex Updated
B	25.02.2025	Red Line Boundary Updated

**Drawn:** AL  
**Approved:** PH  
**Sheet No:** 6 of 10  
**Sheet Size:** A3



The information contained in this document is confidential and protected by copyright. The use, copying or disclosure to a third party, either wholly or in part, except with the written permission of, and in the manner prescribed by BP Exploration Operating Company Limited constitutes an infringement of copyright. Dalcour Maclaren does not warrant that this document is definitive nor free of error and does not accept liability for any loss caused or arising from reliance upon information provided herein. Although our best efforts have been made to ensure the accuracy of these plans, all measurements must be confirmed on site. BASED UPON THE ORDINANCE SURVEY MAP WITH THE SANCTION OF THE CONTROLLER OF HM STATIONERY OFFICE. CROWN COPYRIGHT RESERVED. © OS LICENCE No. AC0000808122



Page 3 of 10

Page 4 of 10

Page 5 of 10

Page 7 of 10

Page 8 of 10

Page 9 of 10



Scale: 1:7500

Site Plan

Drawing Location: C:\Users\andrew.lambe\Dalcour Maclaren\H2 Teesside 22004379 - Geomatics\01 DM Plans\Pro Plans\2025\02\03\_22004379\_PLN\_INFO\_530.6\_B.aprx



- Key:**
- Sembcorp Protection Corridor
  - Order Limits
  - Wilton Complex

**Notes:**

Coordinate System: British National Grid  
Projection: Transverse Mercator  
Datum: OSGB 1936

**Interest:**  
N/A

**Location:**  
Billingham, Stockton-on-Tees, Tees Valley,  
TS2 1TT

**Coords:** 457349, 523099

**Scheme Name:**  
H2 Teesside

**Drawing Name:**  
Information Plan

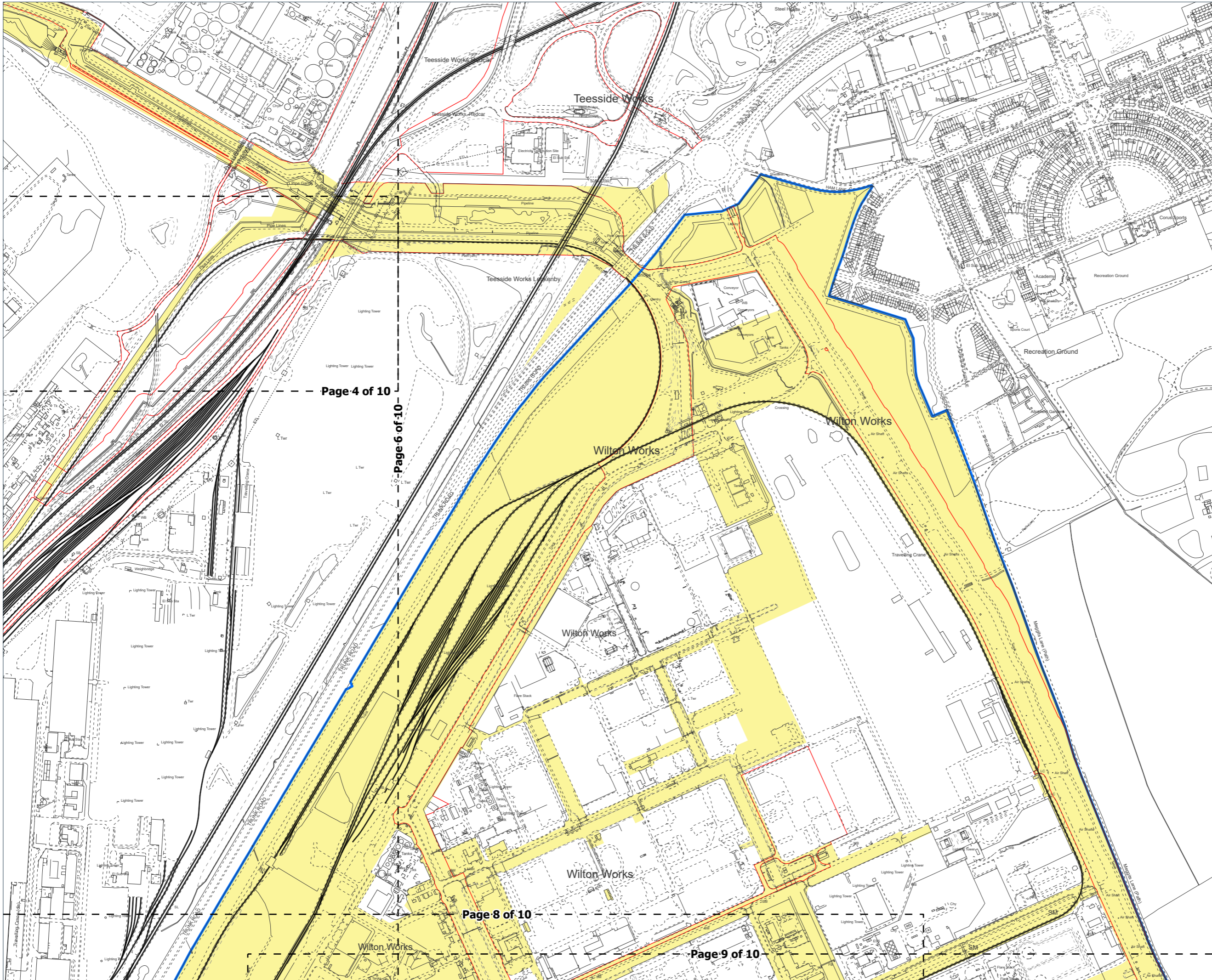
**Drawing No:** 22004379\_PLN\_INFO\_530.7\_B

Rev	Date	Description
-	03.02.2025	First Issue
A	24.02.2025	Red Line Symbology Updated, PP Corridor Updated, Wilton Complex Updated
B	25.02.2025	Red Line Boundary Updated

**Drawn:** AL  
**Approved:** PH  
**Sheet No:** 7 of 10  
**Sheet Size:** A3



The information contained in this document is confidential and protected by copyright. The use, copying or disclosure to a third party, either wholly or in part, except with the written permission of, and in the manner prescribed by BP Exploration Operating Company Limited constitutes an infringement of copyright. Dalcour Maclaren does not warrant that this document is definitive nor free of error and does not accept liability for any loss caused or arising from reliance upon information provided herein. Although our best efforts have been made to ensure the accuracy of these plans, all measurements must be confirmed on site. BASED UPON THE ORDINANCE SURVEY MAP WITH THE SANCTION OF THE CONTROLLER OF HM STATIONERY OFFICE. CROWN COPYRIGHT RESERVED. © OS LICENCE No. AC0000808122



Drawing Location: C:\Users\andrew.lambe\Dalcour Maclaren\H2 Teesside - 22004379 - Geomatics\01 DM Plans\Pro Plans\2025\02\03\_22004379\_PLN\_INFO\_530.7\_B\22004379\_PLN\_INFO\_530.7\_B.aprx



**Key:**

	Sembcorp Protection Corridor
	Order Limits
	Wilton Complex

**Notes:**

Coordinate System: British National Grid  
Projection: Transverse Mercator  
Datum: OSGB 1936

Interest:  
N/A

Location:  
Billingham, Stockton-on-Tees, Tees Valley,  
TS2 1TT

Coords: 456687, 521130

Scheme Name:  
H2 Teesside

Drawing Name:  
Information Plan

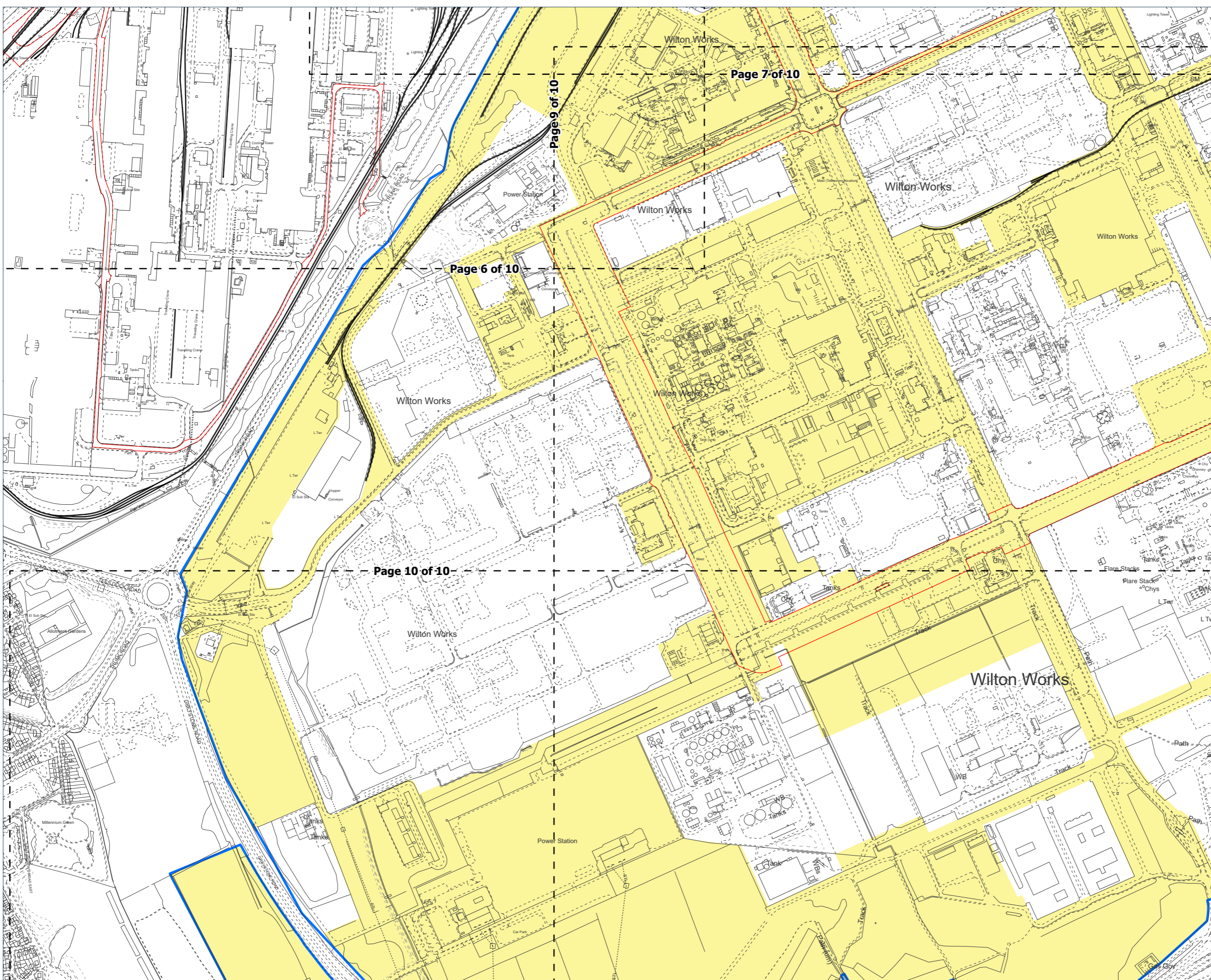
Drawing No: 22004379\_PLN\_INFO\_530.8\_B

Rev	Date	Description
-	03.02.2025	First Issue
A	24.02.2025	Red Line Symbology Updated, PP Corridor Updated, Wilton Complex Updated
B	25.02.2025	Red Line Boundary Updated

Drawn:	AL
Approved:	PH
Sheet No:	8 of 10
Sheet Size:	A3



The information contained in this document is confidential and protected by copyright. The use, copying or disclosure to a third party, either wholly or in part, except with the written permission of, and in the manner prescribed by BP Exploration Operating Company Limited constitutes an infringement of copyright. Dalcour MacLaren does not warrant that this document is definitive nor free of error and does not accept liability for any loss caused or arising from reliance upon information provided herein. Although our best efforts have been made to ensure the accuracy of these plans, all measurements must be confirmed on site. BASED UPON THE ORDINANCE SURVEY MAP WITH THE SANCTION OF THE CONTROLLER OF HM STATIONERY OFFICE. CROWN COPYRIGHT RESERVED. © OS LICENCE No. AC0000808122



Page 7 of 10

Page 6 of 10

Page 10 of 10



Scale: 1:7500

Site Plan

Drawing Location: C:\Users\andrew.lambe\Dalcour MacLaren\H2 Teesside\22004379 - Geomatics\01 DM Plans\Pro Plans\2025\02\03\_22004379\_PLN\_INFO\_530.8\_B.aprx



- Key:**
- Sembcorp Protection Corridor
  - Order Limits
  - Wilton Complex

**Notes:**

Coordinate System: British National Grid  
 Projection: Transverse Mercator  
 Datum: OSGB 1936

Interest:  
N/A

Location:  
Billingham, Stockton-on-Tees, Tees Valley,  
TS2 1TT

Coords: 457877, 521044

Scheme Name:  
H2 Teesside

Drawing Name:  
Information Plan

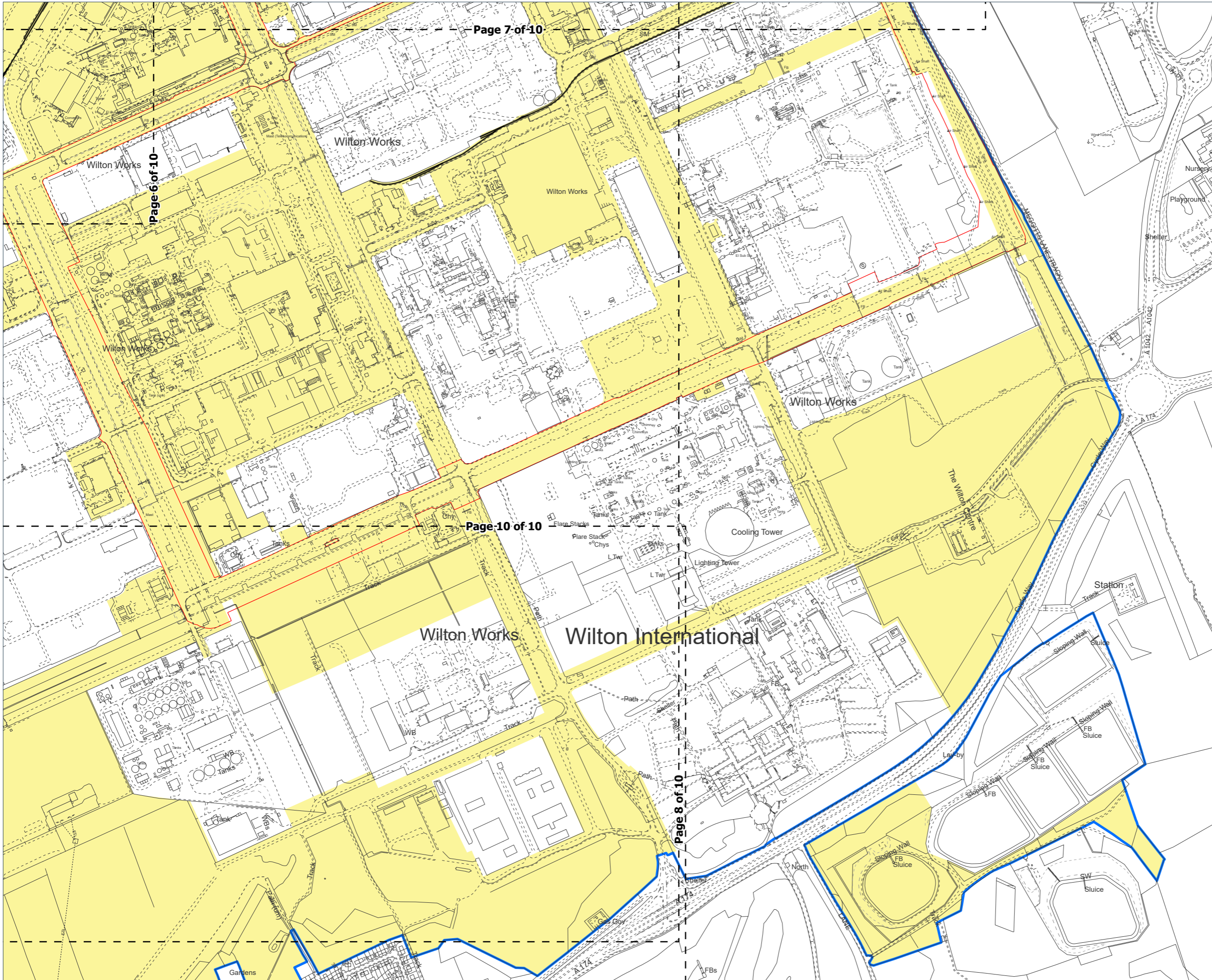
Drawing No: 22004379\_PLN\_INFO\_530.9\_B

Rev	Date	Description
-	03.02.2025	First Issue
A	24.02.2025	Red Line Symbology Updated, PP Corridor Updated, Wilton Complex Updated
B	25.02.2025	Red Line Boundary Updated

Drawn: AL  
 Approved: PH  
 Sheet No: 9 of 10  
 Sheet Size: A3



The information contained in this document is confidential and protected by copyright. The use, copying or disclosure to a third party, either wholly or in part, except with the written permission of, and in the manner prescribed by BP Exploration Operating Company Limited constitutes an infringement of copyright. Dalcour Maclaren does not warrant that this document is definitive nor free of error and does not accept liability for any loss caused or arising from reliance upon information provided herein. Although our best efforts have been made to ensure the accuracy of these plans, all measurements must be confirmed on site. BASED UPON THE ORDINANCE SURVEY MAP WITH THE SANCTION OF THE CONTROLLER OF HM STATIONERY OFFICE. CROWN COPYRIGHT RESERVED. © OS LICENCE No. AC0000808122



Drawing Location: C:\Users\andrew.lambe\Dalcour Maclaren\H2 Teesside\22004379 - Geomatics\01 DM Plans\Pro Plans\22004379\_PLN\_INFO\_530.9\_B.aprx



- Key:**
- Sembcorp Protection Corridor
  - Order Limits
  - Wilton Complex

**Notes:**

Coordinate System: British National Grid  
Projection: Transverse Mercator  
Datum: OSGB 1936

Interest:  
N/A

Location:  
Billingham, Stockton-on-Tees, Tees Valley,  
TS2 1TT

Coords: 456702, 519912

Scheme Name:  
H2 Teesside

Drawing Name:  
Information Plan

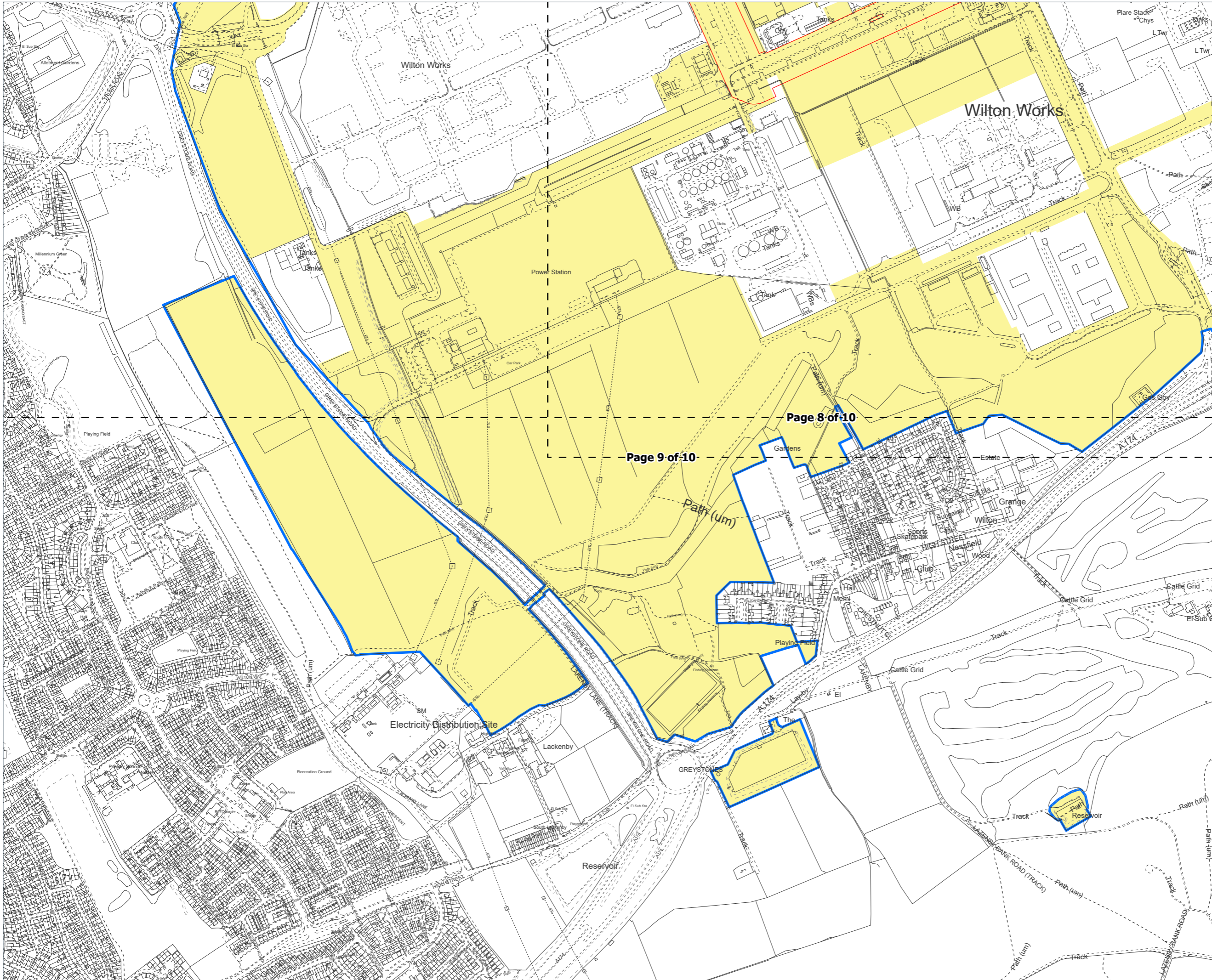
Drawing No: 22004379\_PLN\_INFO\_530.10\_B

Rev	Date	Description
-	03.02.2025	First Issue
A	24.02.2025	Red Line Symbology Updated, PP Corridor Updated, Wilton Complex Updated
B	25.02.2025	Red Line Boundary Updated

Drawn: AL  
Approved: PH  
Sheet No: 10 of 10  
Sheet Size: A3



The information contained in this document is confidential and protected by copyright. The use, copying or disclosure to a third party, either wholly or in part, except with the written permission of, and in the manner prescribed by BP Exploration Operating Company Limited constitutes an infringement of copyright. Dalcour Maclaren does not warrant that this document is definitive nor free of error and does not accept liability for any loss caused or arising from reliance upon information provided herein. Although our best efforts have been made to ensure the accuracy of these plans, all measurements must be confirmed on site. BASED UPON THE ORDINANCE SURVEY MAP WITH THE SANCTION OF THE CONTROLLER OF HM STATIONERY OFFICE. CROWN COPYRIGHT RESERVED. © OS LICENCE NO. AC0000808122



Page 8 of 10

Page 9 of 10

